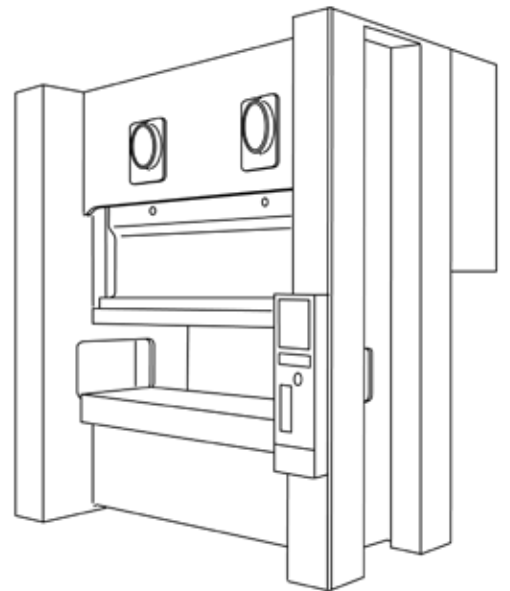
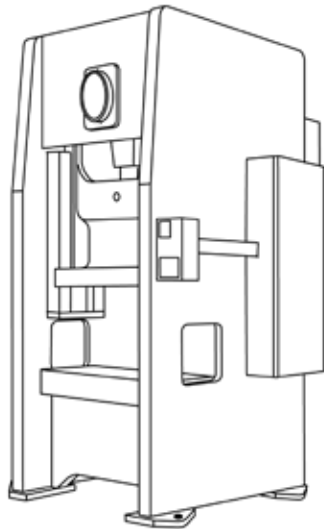
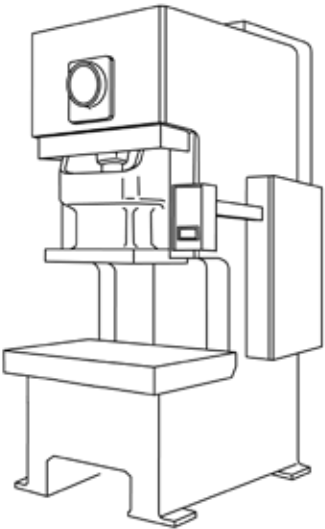


DSF

DIRECT DRIVE
SERVOFORMER

DSF-C1 series
DSF-N1 series
DSF-N2 series

SPECS



AIDA
America

DSF-C1 MODELS

Press Technical Data	Unit	DSF-C1-800				DSF-C1-1100				DSF-C1-1500				DSF-C1-2000				DSF-C1-2500			
Tonnage Capacity	kN	800				1100				1500				2000				2500			
	U.S. Ton	88				121				165				220				275			
Rated Tonnage Point	mm	5.0				5.0				6.0				6.0				6.5			
	in.	0.197				0.197				0.236				0.236				0.256			
Working Energy	J	4000				4600				7900				13100				24000			
	in-U.S. Ton	18				20				35				58				106			
Slide Stroke Length (maximum)	mm	160				180				200				250				300			
	in.	6.30				7.09				7.87				9.84				11.81			
SPM @ Full Stroke Length (no load)	spm	1 - 80				1 - 70				1 - 60				1 - 50				1 - 40			
Stroke Length, Fully Adjustable * (See AIDA for further examples)	mm	50	75	100	125	50	75	100	125	50	75	100	125	50	75	100	125	50	75	100	125
	in.	2.0	3.0	3.9	4.9	2.0	3.0	3.9	4.9	2.0	3.0	3.9	4.9	2.0	3.0	3.9	4.9	2.0	3.0	3.9	4.9
SPM @ Stroke Length Above (no load)	spm	125	115	95	85	130	110	95	85	120	102	88	79	108	95	85	75	100	87	78	71
Die Height (SDAU)	mm	320				350				400				450				540			
	in.	12.60				13.78				15.75				17.72				21.26			
Slide Adjustment	mm	80				90				100				110				120			
	in.	3.15				3.54				3.94				4.33				4.72			
Slide Area (LR x FB)	mm	540 x 460				630 x 520				700 x 580				880 x 650				1100 x 730			
	in.	21.3 x 18.1				24.8 x 20.5				27.6 x 22.8				34.6 x 25.6				43.3 x 28.7			
Bolster Area (LR x FB)	mm	1030 x 600				1140 x 680				1250 x 760				1470 x 840				1750 x 900			
	in.	40.6 x 23.6				44.9 x 26.8				49.2 x 29.9				57.9 x 33.1				68.9 x 35.4			
Bolster Thickness	mm	140				155				165				180				180			
	in.	5.5				6.1				6.5				7.1				7.1			
Throat Depth	mm	310				350				390				430				470			
	in.	12.2				13.8				15.4				16.9				18.5			
Max. Upper Die Weight	kg	625				530				727				1000				1300			
	lbs.	1378				1168				1603				2205				2866			
Main Motor (SERVO)	kW	38				40				55				120				120			
	HP	50				55				75				160				160			
Power Supply Capacity	kVA	21				21				26				35				43			
Required Air Pressure	MPa	0.5				0.5				0.5				0.5				0.5			
	psi	73				73				73				73				73			
Foundation Bolt Position (LR x FB)	mm	1010 x 1210				1105 x 1440				1210 x 1660				1440 x 2020				1730 x 2135			
	in.	39.8 x 47.6				43.5 x 56.7				47.6 x 65.4				56.7 x 79.5				68.1 x 84.1			
Bed Opening Dimension (LR x FB)	mm	714 x 280				736 x 320				806 x 360				986 x 460				1220 x 480			
	in.	28.1 x 11.0				29.0 x 12.6				31.7 x 14.2				38.8 x 18.1				48.0 x 18.9			
Inside Frame Dimension	mm	586				615				685				865				1099			
	in.	23.1				24.2				27.0				34.1				43.3			
Floor to Top of Bolster (without mounts)	mm	900				900				900				1000				1100			
	in.	35.4				35.4				35.4				39.4				43.3			
Overall Dimension (LR x FB)	mm	1796 x 2485				1915 x 2585				2025 x 3019				2145 x 2950				2288 x 2970			
	in.	70.7 x 97.8				75.4 x 101.8				79.7 x 118.9				84.4 x 116.1				90.1 x 116.9			
Approx. Overall Height (without mounts)	mm	2845				3085				3245				3692				4376			
	in.	112				121				128				145				172			

* Dimensions shown in inches rounded to the nearest tenth.

** Dimensions in parentheses () show the height above the bolster.

DSF-N1 MODELS

Press Technical Data	Unit	DSF-N1-800				DSF-N1-1100				DSF-N1-1500				DSF-N1-2000				DSF-N1-3000		
Tonnage Capacity	kN	800				1100				1500				2000				3000		
	U.S. Ton	88				121				165				220				330		
Rated Tonnage Point	mm	5.0				5.0				6.0				6.0				5.0		
	in.	0.197				0.197				0.236				0.236				0.197		
Working Energy	J	4000				4600				7900				13100				18000		
	in-U.S. Ton	18				20				35				58				80		
Slide Stroke Length (maximum)	mm	160				180				200				250				300		
	in.	6.30				7.09				7.87				9.84				11.81		
SPM @ Full Stroke Length (no load)	spm	1 - 80				1 - 70				1 - 60				1 - 50				1 - 35		
Stroke Length, Fully Adjustable * (See AIDA for further examples)	mm	50	75	100	125	50	75	100	125	50	75	100	125	50	75	100	125	300	240	180
	in.	2.0	3.0	3.9	4.9	2.0	3.0	3.9	4.9	2.0	3.0	3.9	4.9	2.0	3.0	3.9	4.9	11.8	9.4	7.1
SPM @ Stroke Length Above (no load)	spm	125	115	95	85	130	110	95	85	120	102	88	79	108	95	85	75	35	41	50
Die Height (SDAU)	mm	320				350				400				450				570		
	in.	12.60				13.78				15.75				17.72				22.44		
Slide Adjustment	mm	80				90				100				110				120		
	in.	3.15				3.54				3.94				4.33				4.72		
Slide Area (LR x FB)	mm	700 x 460				800 x 520				900 x 580				1000 x 650				1300 x 900		
	in.	27.6 x 18.1				31.5 x 20.5				35.4 x 22.8				39.4 x 25.6				51.2 x 35.4		
Bolster Area (LR x FB)	mm	900 x 600				1000 x 680				1150 x 760				1250 x 840				1500 x 1000		
	in.	35.4 x 23.6				39.4 x 26.8				45.3 x 29.9				49.2 x 33.1				59.1 x 39.4		
Bolster Thickness	mm	140				155				165				180				200		
	in.	5.5				6.1				6.5				7.1				7.9		
Side Opening **	mm	440 x 300 (250)				500 x 320 (270)				560 x 380 (330)				620 x 420 (370)				1000 x 550 (530)		
	in.	17.3 x 11.8 (9.8)				19.7 x 12.6 (10.6)				22.0 x 15.0 (13)				24.4 x 16.5 (14.6)				39.4 x 21.7 (20.9)		
Max. Upper Die Weight	kg	300				350				500				1000				1300		
	lbs.	661				772				1102				2205				2866		
Main Motor (SERVO)	kW	38				40				55				120				120		
	HP	50				55				75				160				160		
Power Supply Capacity	kVA	21				21				26				35				69		
Required Air Pressure	MPa	0.5				0.5				0.5				0.5				0.5		
	psi	73				73				73				73				73		
Foundation Bolt Position (LR x FB)	mm	1220 x 1200				1344 x 1310				1525 x 1450				1655 x 1590				1740 x 1600		
	in.	48.0 x 47.2				52.9 x 51.6				60.0 x 57.1				65.2 x 62.6				68.5 x 63.0		
Bed Opening Dimension (LR x FB)	mm	1036 x 280				1160 x 320				1330 x 360				1450 x 460				620 x 620		
	in.	40.8 x 11.0				45.7 x 12.6				52.4 x 14.2				57.1 x 18.1				24.4 x 24.4		
Inside Frame Dimension	mm	878				950				1100				1300				1536		
	in.	34.6				37.4				43.3				51.2				60.5		
Press Foot to Top of Bolster (without mounts)	mm	900				900				900				1000				1120		
	in.	35.4				35.4				35.4				39.4				44.1		
Overall Dimension (LR x FB)	mm	1500 x 2160				1868 x 2234				1820 x 2520				2005 x 2175				2500 x 3100		
	in.	59.1 x 85.0				73.5 x 88.0				71.7 x 99.2				78.9 x 85.6				98.4 x 122.0		
Approx. Overall Height (without mounts)	mm	2965				3040				3300				3795				4745		
	in.	117				120				130				149				187		

* Dimensions shown in inches rounded to the nearest tenth.

** Dimensions in parentheses () show the height above the bolster.

DSF-N2 MODELS

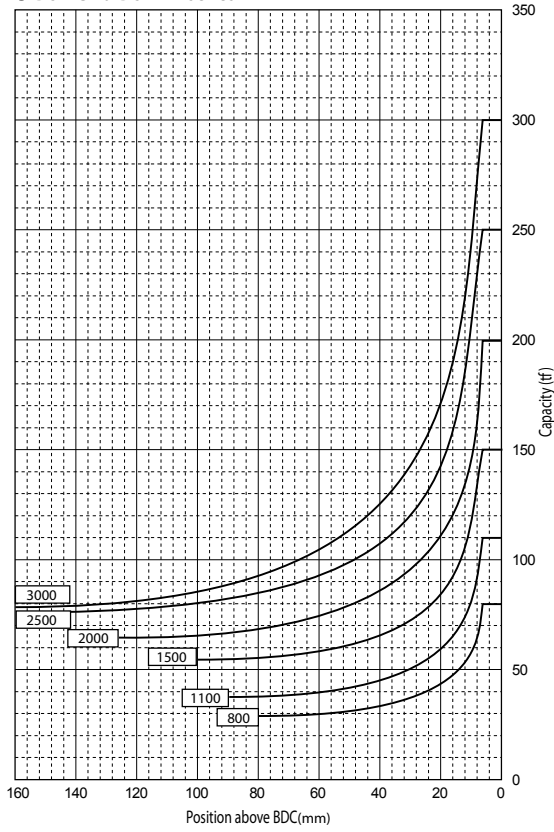
Press Technical Data	Unit	DSF-N2-1100				DSF-N2-1600				DSF-N2-2000				DSF-N2-2500					DSF-N2-3000				
Tonnage Capacity	kN	1100				1600				2000				2500					3000				
	U.S. Ton	121				176				220				275					330				
Rated Tonnage Point	mm	5.0				6.0				7.0				7.0					6.0				
	in.	0.197				0.236				0.276				0.276					0.236				
Working Energy	J	6000				9600				16500				28000					39000				
	in-U.S. Ton	27				42				73				124					173				
Slide Stroke Length (maximum)	mm	180				200				250				280					300				
	in.	7.09				7.87				9.84				11.02					11.81				
SPM @ Full Stroke Length (no load)	spm	1 - 70				1 - 60				1 - 50				1 - 40					1 - 35				
Stroke Length, Fully Adjustable * (See AIDA for further examples)	mm	50	75	100	125	50	75	100	125	50	75	100	125	50	75	100	125	150	50	75	100	125	150
	in.	2.0	3.0	3.9	4.9	2.0	3.0	3.9	4.9	2.0	3.0	3.9	4.9	2.0	3.0	3.9	4.9	5.9	2.0	3.0	3.9	4.9	5.9
SPM @ Stroke Length Above (no load)	spm	115	100	90	80	110	97	88	78	105	92	82	75	96	84	75	68	61	90	78	69	62	57
Die Height (SDAU)	mm	400				450				500				550					650				
	in.	15.75				17.72				19.68				21.65					25.59				
Slide Adjustment	mm	90				100				110				120					130				
	in.	3.54				3.94				4.33				4.72					5.12				
Slide Area (LR x FB)	mm	1360 x 520				1500 x 580				1850 x 650				2100 x 700					2400 x 900				
	in.	53.5 x 20.5				59.1 x 22.8				72.8 x 25.6				82.7 x 27.6					94.5 x 35.4				
Bolster Area (LR x FB)	mm	1660 x 680				1800 x 760				2150 x 840				2400 x 920					2600 x 1200				
	in.	65.4 x 26.8				70.9 x 29.9				84.6 x 33.1				94.5 x 36.2					102.4 x 47.2				
Bolster Thickness	mm	155				165				170				180					200				
	in.	6.1				6.5				6.7				7.1					7.9				
Side Opening **	mm	700 x 440 (430)				780 x 480 (470)				860 x 520 (510)				940 x 560 (550)					1220 x 690 (680)				
	in.	27.6 x 17.3 (16.9)				30.7 x 18.9 (18.5)				33.9 x 20.5 (20.1)				37.0 x 22.0 (21.7)					48.0 x 27.2 (26.8)				
Max. Upper Die Weight	kg	550				800				1200				1650					2300				
	lbs.	1213				1764				2646				3638					5071				
Main Motor (SERVO)	kW	40				55				120				120					120				
	HP	55				75				160				160					160				
Power Supply Capacity	kVA	26				35				43				61					69				
Required Air Pressure	MPa	0.5				0.5				0.5				0.5					0.5				
	psi	73				73				73				73					73				
Foundation Bolt Position (LR x FB)	mm	2090 x 1200				2270 x 1300				2620 x 1400				2920 x 1500					3260 x 1650				
	in.	82.3 x 47.2				89.4 x 51.2				103.1 x 55.1				115.0 x 59.1					128.3 x 65.0				
Bed Opening Dimension (LR x FB)	mm	1480 x 350				1600 x 380				1900 x 460				2200 x 480					2390 x 520				
	in.	58.3 x 13.8				63.0 x 15.0				74.8 x 18.1				86.6 x 18.9					94.1 x 20.5				
Inside Frame Dimension	mm	1730				1910				2050				2520					2550				
	in.	68.1				75.2				80.7				99.2					100.4				
Press Foot Top of Bolster (without mounts)	mm	900				900				1000				1100					1150				
	in.	35.4				35.4				39.4				43.3					45.3				
Overall Dimension (LR x FB)	mm	2515 x 2605				2695 x 2805				2960 x 2905				3255 x 3245					3725 x 3355				
	in.	99.0 x 102.6				106.1 x 110.4				116.5 x 114.4				128.1 x 127.8					146.7 x 132.1				
Approx. Overall Height (without mounts)	mm	3080				3340				3730				4135					4460				
	in.	121				131				147				163					176				

* Dimensions shown in inches rounded to the nearest tenth.

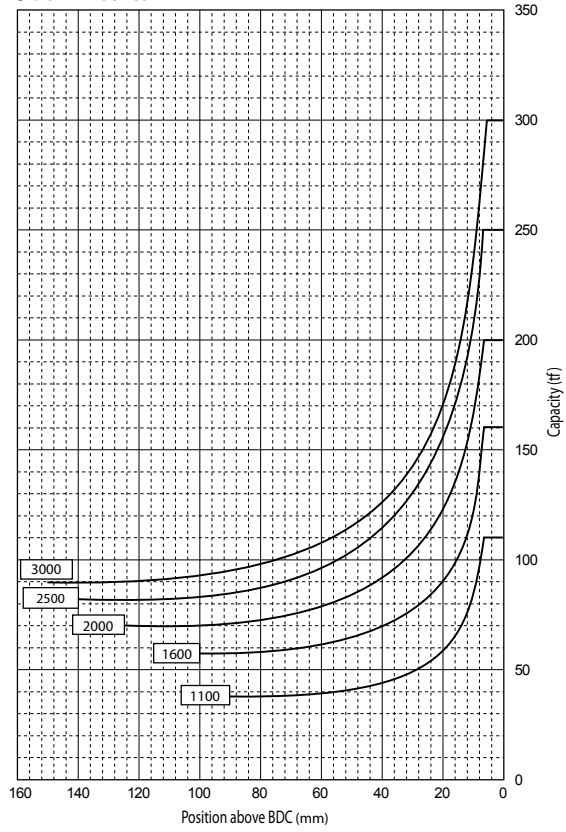
** Dimensions in parentheses () show the height above the bolster.

■ Tonnage Curve

● DSF-C1 & DSF-N1 series

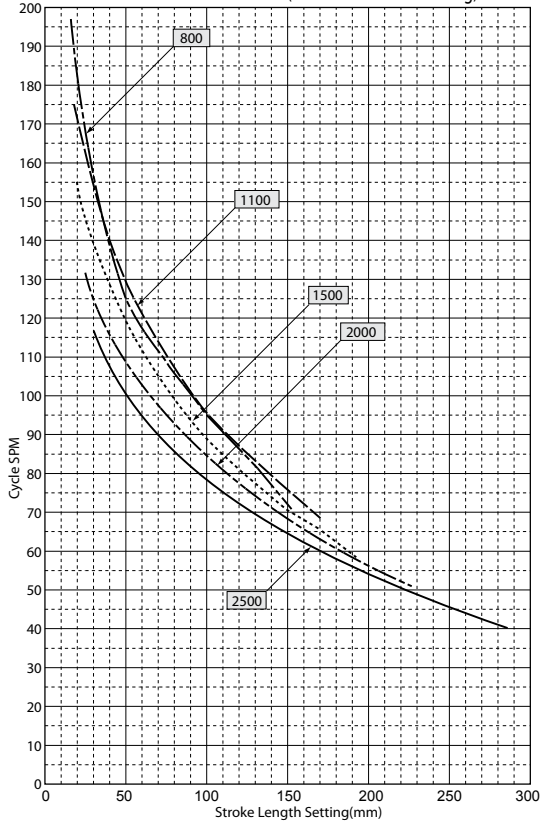


● DSF-N2 series

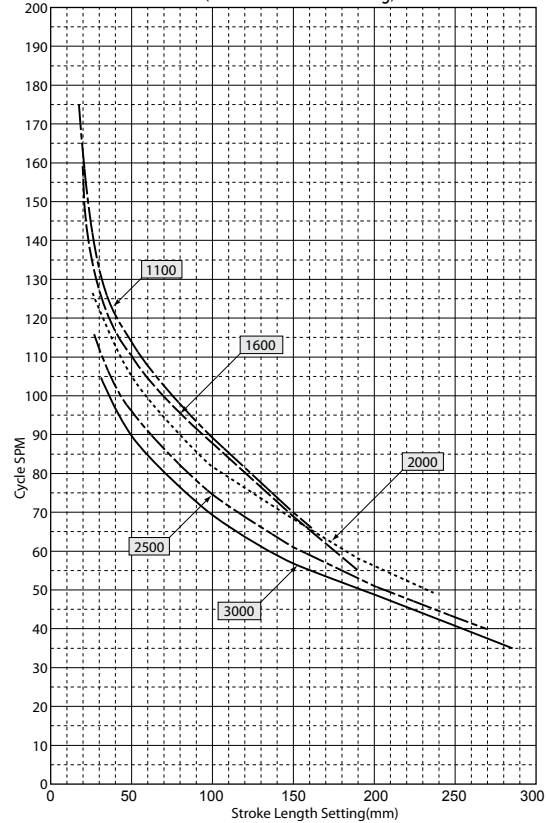


■ Fwd./Rev. Motion 1.Cycle SPM

● DSF-C1 & DSF-N1series (At Maximum SPM Setting)



● DSF-N2 series (At Maximum SPM Setting)



* Dimensions shown in inches rounded to the nearest tenth.

** Dimensions in parentheses () show the height above the bolster.

Standard / Optional Equipment

⊙ Standard Equipment

○ Optional Equipment

– Equipment Not Available

	Equipment Details	DSF-C1	DSF-N1	DSF-N2
Standard Equipment	Hydraulic Overload Protector (HOLP)	⊙	⊙	⊙
	HOLP Lower Pressure Setting Device	⊙	⊙	⊙
	Electronic Crank Angle Indicator	⊙	⊙	⊙
	Die Height Indicator (Units: 0.01 mm)	⊙	⊙	⊙
	Motorized Slide Adjustment	⊙	⊙	⊙
	Preset Stop Point Selectors	⊙	⊙	⊙
	Forced Recirculation Lubrication System	⊙	⊙	⊙
	Control Panel	⊙	⊙	⊙
	Main Operation Panel	⊙	⊙	⊙
	T-Stand, 2-Hand Operation Type, w/ Manual Step Feed Control	⊙	⊙	⊙
	Servo Driver	⊙	⊙	⊙
	MPSVC	⊙	⊙	⊙
	PLC (Programmable Logic Controller)	⊙	⊙	⊙
	HMI (Human-Machine Interface)	⊙	⊙	⊙
	Timing Switch: 4 Spare Cams	⊙	⊙	⊙
	Production Counters: Three-6-Digit Resettable Type	⊙	⊙	⊙
	Maintenance Counter: Non-Reset Type	⊙	⊙	⊙
	Data Bank: 99 Die Recipe Capacity	⊙	⊙	⊙
	Light Curtains (On Front of Press)	⊙	–	–
	Light Curtain (Front & Rear)	–	⊙	⊙
	Emergency Stop Button	⊙	⊙	⊙
	Die Block with Plug	⊙	⊙	⊙
	Pressure Switches (Pneumatic & Hydraulic)	⊙	⊙	⊙
	Die Protection: 2 Circuits, No Receptacles	⊙	⊙	⊙
	Air Ejector: 3/8B, 1 Set	⊙	⊙	⊙
	Air Outlet: 3/8B, 1 Set	⊙	⊙	⊙
Rear Cover	⊙	⊙	–	
Instruction Manual (English Version: 1)	⊙	⊙	⊙	
Optional Equipment	Die Cushion	○	○	○
	Die Lifters	○	○	○
	Die Clampers	○	○	○
	100 V Receptacles	○	○	○
	200 V Receptacles	○	○	○
	Isolation Mounts	○	○	○
	7 channel small Die Protection	○	○	○
	Die Area Lighting: Spotlight Type	○	○	○
	Safety Guarding	○	○	○
	Tonnage Monitor (ALA2)	○	○	○
	Heating Device	○	○	○
	Automation Devices	○	○	○
Hydraulic Slide Knockout	○	○	○	

There are many other types of optional equipment available, please contact AIDA-America for further information.



AIDA-America Corporation

7660 Center Point 70 Blvd., Dayton, OH U.S.A. 45424

Office: (937) 237-2382 Service: (937) 235-3599

info@aida-america.com www.aida-america.com

